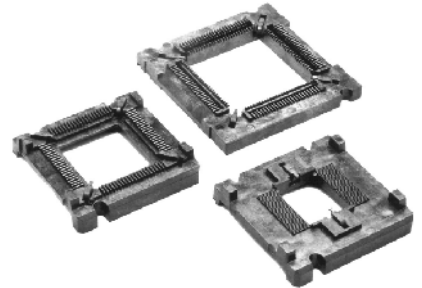




# 2" X 2" SLIDE LOCK CARRIER

- Manual release feature
- Designed for heavy IC packages

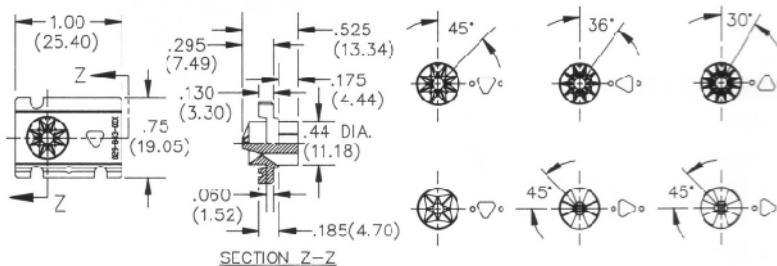
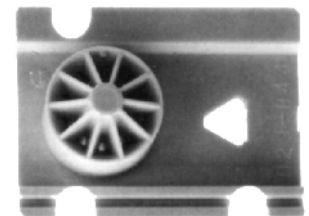


Part Number	Lead Count	Pitch e (mm)	Device Dimensions (mm)		Notes
			Width	Length	
029-904-0XX	44/66 **	.025 (0.64)	.670 (17.02)	.800 (20.32)	Consult Factory
029-901-0XX	84 ***	.050 (1.27)	1.16 (29.46)	1.16 (29.46)	Consult Factory
029-902-0XX	84 ***	.050 (1.27)	1.16 (29.46)	1.16 (29.46)	Consult Factory
029-906-0XX*	100 ***	.050 (1.27)	1.45 (36.83)	1.45 (36.83)	Consult Factory

\*\* Flat Pack \*\*\* Quad Flat Pack

## CARRIERS FOR STANDARD TO DEVICE

- Flat surface built into every other thru lead hole to hold the device securely during bowl feeding or handling
- Many custom versions also available



Part Number	Lead Count	Max Lead Length (mm)	Pin Circle Dia.	Notes
029-859-0XX	4	.565 (14.35)	.100 (2.54)	Consult Factory
029-857-0XX	4	.525 (13.34)	.215 (5.46)	Consult Factory
029-842-0XX	6	.565 (14.35)	.100 (2.54)	
029-863-0XX	6	.525 (13.34)	.100 (2.54)	Consult Factory
029-843-0XX	8	.525 (13.34)	.215 (5.46)	
029-861-0XX	8	.525 (13.34)	.300 (7.62)	
029-864-0XX	8	.525 (13.34)	.300 (7.62)	Consult Factory
029-844-0XX	10	.525 (13.34)	.215 (5.46)	
029-862-0XX	10	.525 (13.34)	.330 (8.38)	Consult Factory

062607