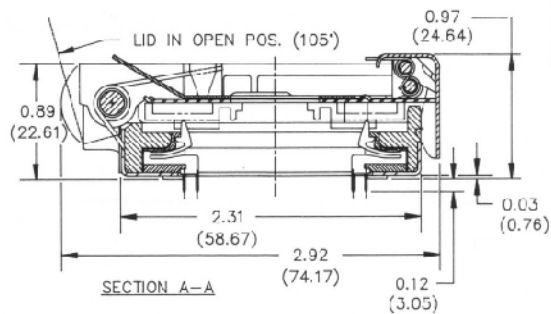
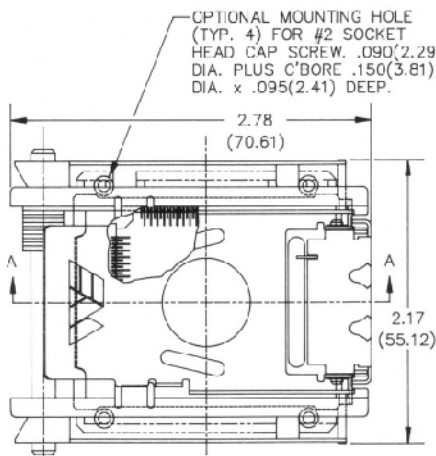




619 SERIES PENULTIMATE[®] CONTACTOR

- Mechanical Advantage Latch provides easy operation
- Preloaded high normal force contacts on .025" and .050" centers
- Teflon[®] coated base to ESD levels
- Plastic base insert encased by metal permits elevated temperature operation of high lead counts
- Accepts 2" x 2" Quad Pack carriers



MATERIALS & SPECIFICATIONS

- Socket Body: UL 94V-0 rated high temperature material
- Contacts: Beryllium Copper Alloy
- Contact Plating: 30 microinches of gold over 50 microinches of nickel

Part Number	Pin Count	Pitch e (mm)	Contact Material	Contact Plating	Notes
619-0440811	44	.050 (1.27)	BeCu	Au/Ni	Consult Factory
619-0680811	68	.050 (1.27)	BeCu	Au/Ni	Consult Factory
619-1000811-002	68	.025 (0.64)	BeCu	Au/Ni	Consult Factory
619-0840811	84	.050 (1.27)	BeCu	Au/Ni	Consult Factory
619-1000811-001	84	.025 (0.64)	BeCu	Au/Ni	Consult Factory
619-1000811	100	.025 (0.64)	BeCu	Au/Ni	Consult Factory
619-1320811	132	.025 (0.64)	BeCu	Au/Ni	Consult Factory
619-1640811	164	.025 (0.64)	BeCu	Au/Ni	Consult Factory